

WHEELLOCK COLLEGE

CAMPUS CENTER AND STUDENT RESIDENCE

schematic lighting design



courtesy of william rawn associates

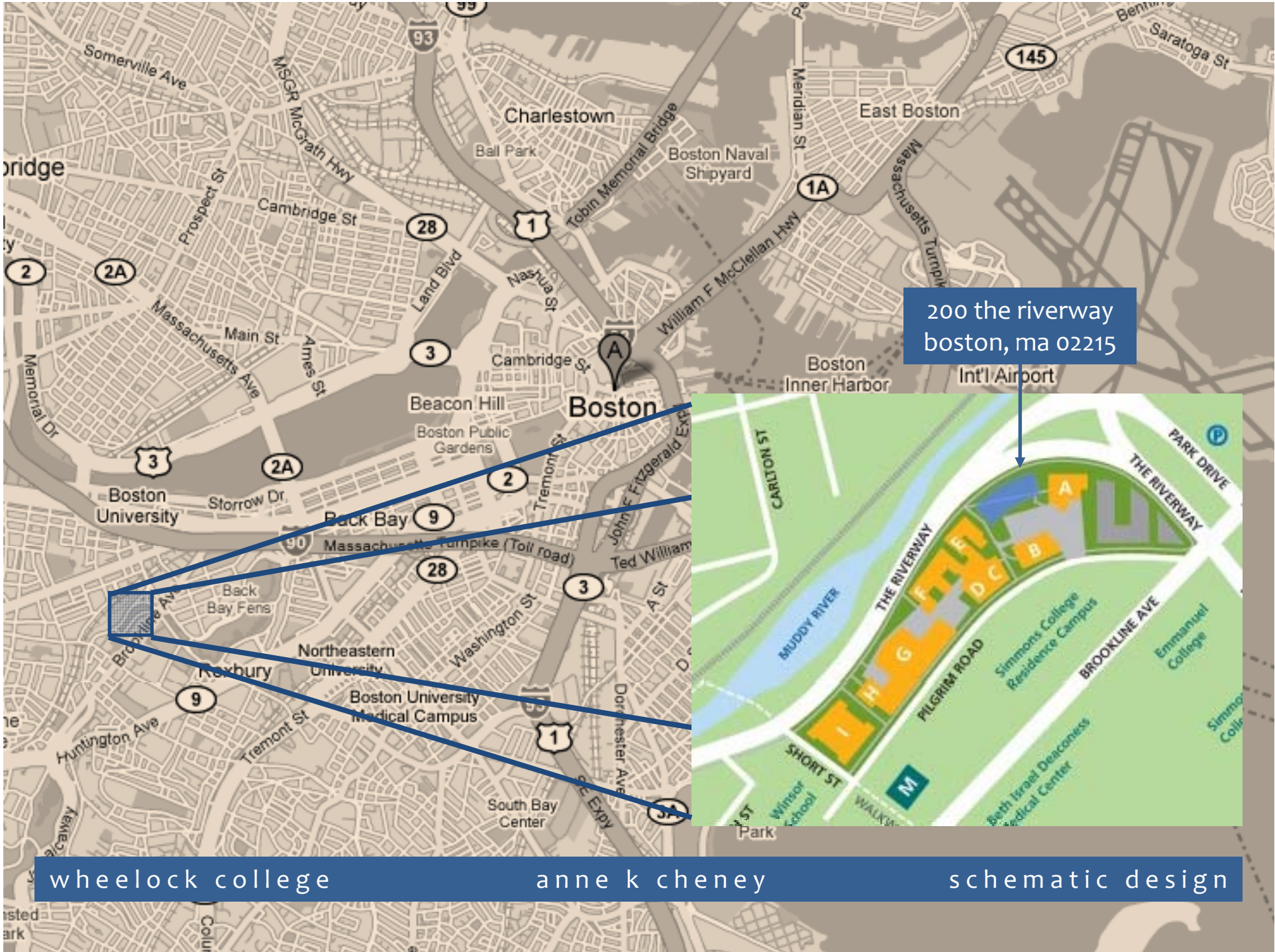
anne k cheney
lighting | electrical option
advisor : dr. kevin houser

building statistics

size		60,000 sf
floors		7 floors
construction		09.27.07 – 12.31.08
delivery method		design-bid-build
cost		\$23 million

project team

owner		wheelock college
architect		william rawn associates
lighting		h1b lighting design
structural		lemessurier consultants, inc
m/e/p		vanderweil engineering
general contractor		shawmut design and construction



200 the riverway
boston, ma 02215



wheelock college anne k cheney schematic design

building functions

dormitory

campus store

cafeteria

student lounge

office space

café

conference room

www.spinicheng.com



wheelock college

anne k cheney

schematic design

building features

green roof deck

curved façade

floor-to-ceiling windows

metal panel façade

wood panel walls

large main staircase



wheelock college

anne k cheney

schematic design

design scope

student lounge | The first floor lounge gives students and faculty a place to relax during the day.

conference room | The conference room is a multi-task space, utilized as a meeting space, a classroom and a presentation space.

cafeteria serving space | The cafeteria serving area is a circulation space where students buy their food, eat and socialize.

third floor balcony | The third floor balcony houses a roof garden, and provides students with an outdoor space to relax away from the noise of campus.

typical dormitory room | The dormitories act as a study, living and sleeping space for two students.

design scope

student lounge | The first floor lounge gives students a place to relax during the day. It also serves as a building entrance and circulation space.

conference room | The conference room is a multi-task space, utilized as a meeting space, a classroom and a presentation space.

cafeteria serving space | The cafeteria serving area is a circulation space where students buy their food, eat and socialize.

third floor balcony | The third floor balcony houses a roof garden, and provides students with an outdoor space to relax away from the noise of campus.

typical dormitory room | The dormitories act as a study, living and sleeping space for two students.

design scope

student lounge
conference room
cafeteria serving space
third floor balcony
typical dormitory room



wheelock college

anne k cheney

schematic design

CONSIDERATIONS/CRITERIA

glass walls to the outside and to the campus store

wood paneling on upper wall

large wood staircase

horizontal illuminance: 10 fc

vertical illuminance: none

design scope

student lounge

conference room

cafeteria serving space

third floor balcony

typical dormitory room

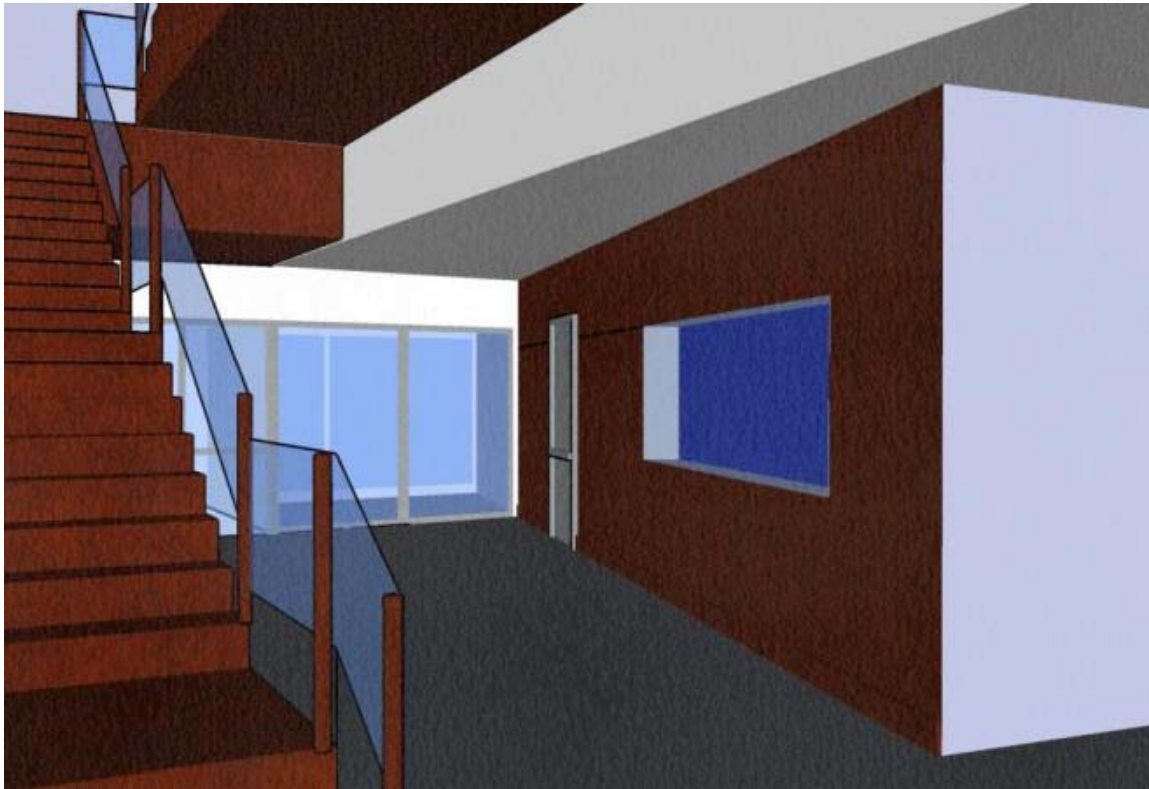
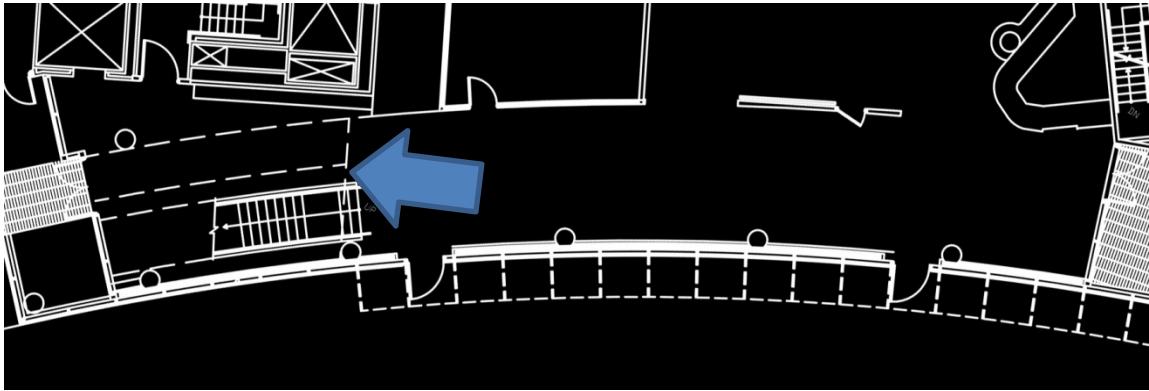
DESIGN CONCEPTS

draw people **inside** the space

direct people towards other spaces

design scope

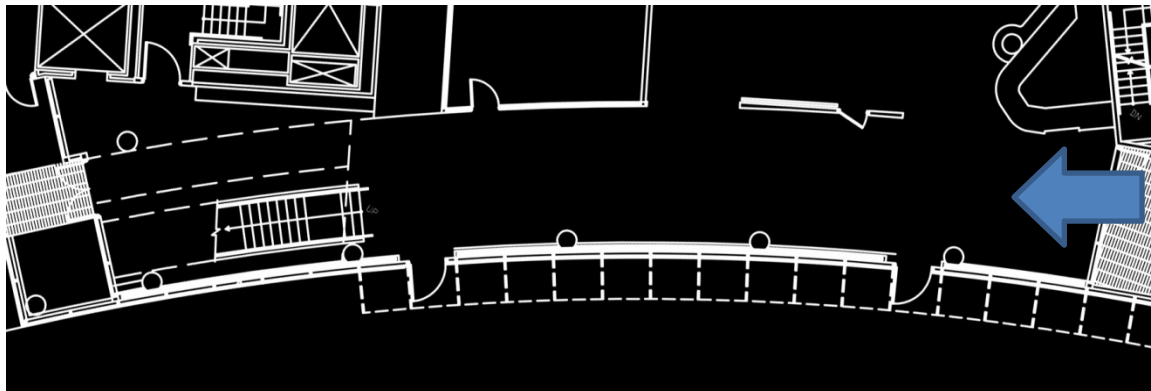
- student lounge
- conference room
- cafeteria serving space
- third floor balcony
- typical dormitory room



wheelock college

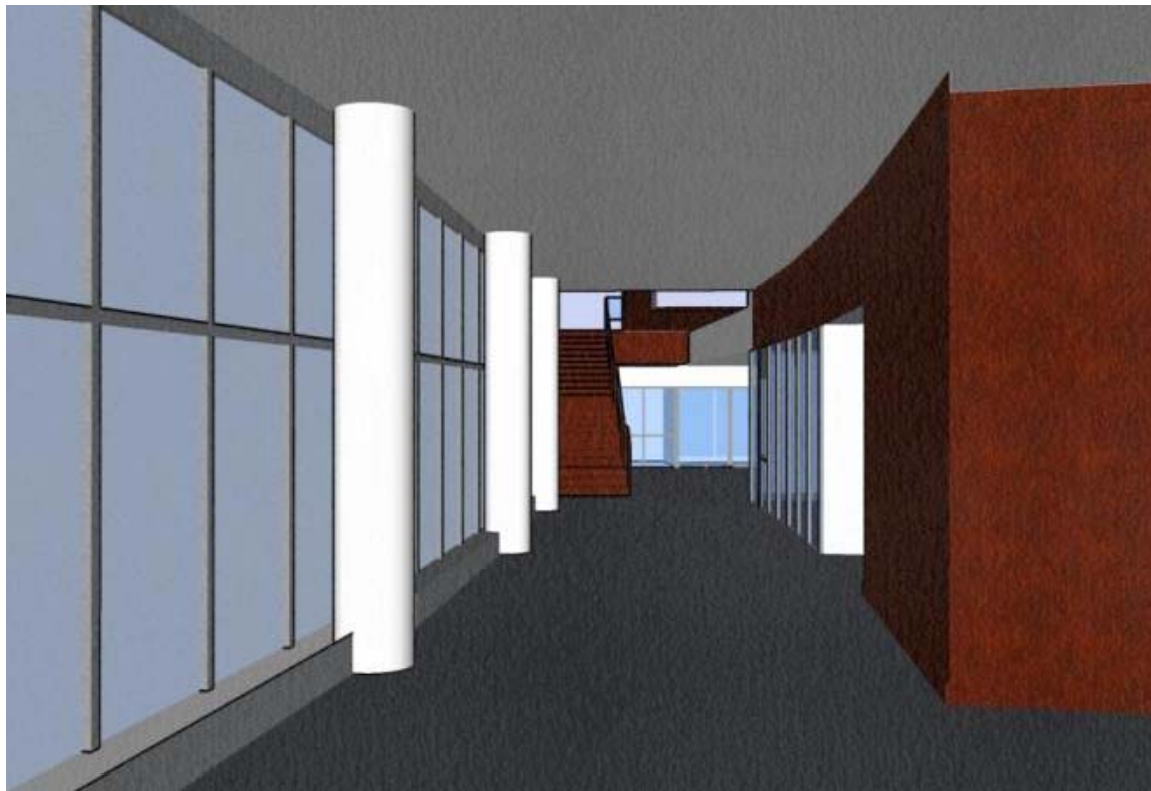
anne k cheney

schematic design



design scope

- student lounge
- conference room
- cafeteria serving space
- third floor balcony
- typical dormitory room



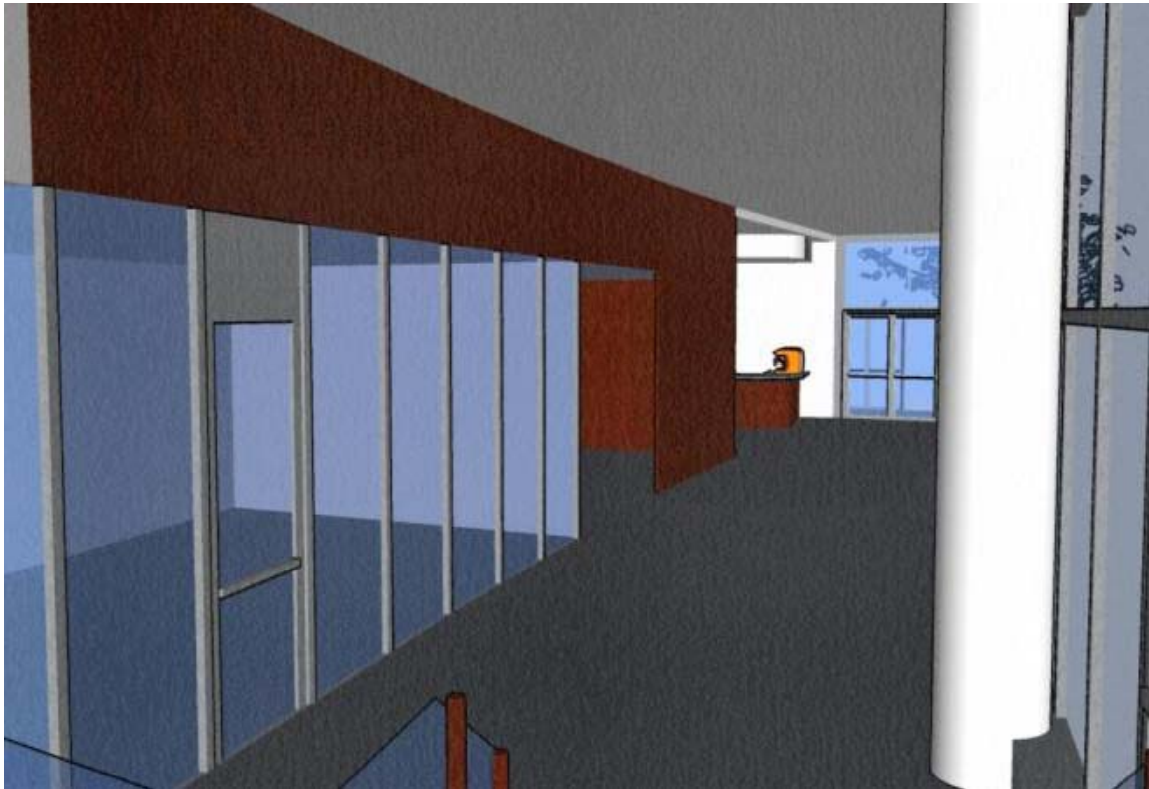
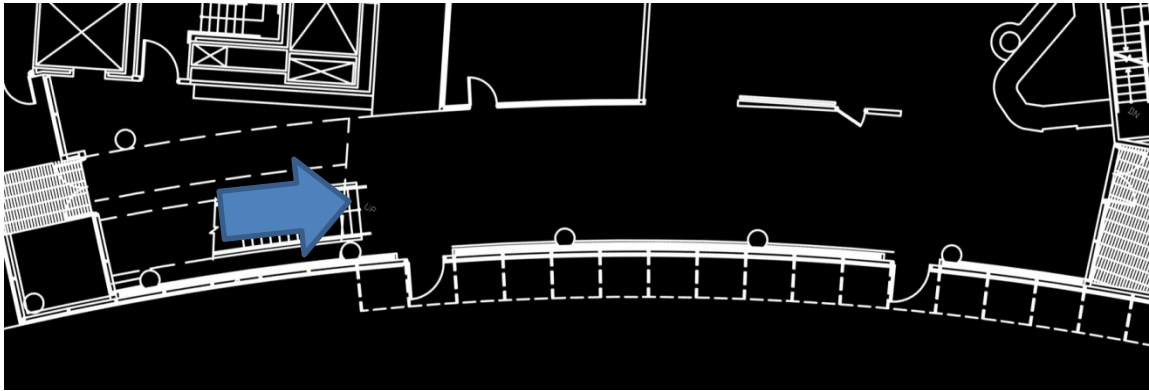
wheelock college

anne k cheney

schematic design

design scope

- student lounge
- conference room
- cafeteria serving space
- third floor balcony
- typical dormitory room



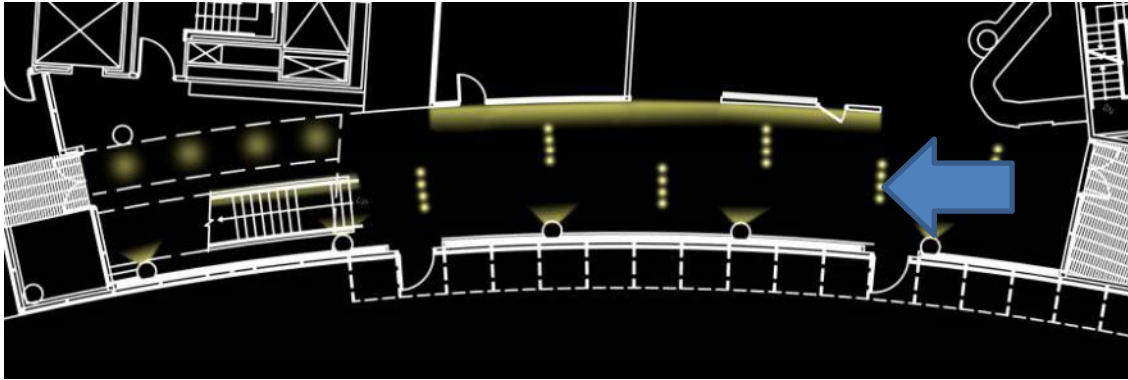
wheelock college

anne k cheney

schematic design

design scope

- student lounge
- conference room
- cafeteria serving space
- third floor balcony
- typical dormitory room



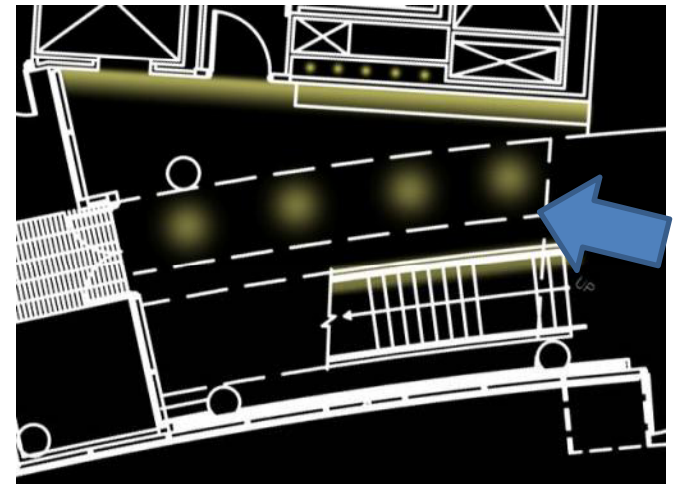
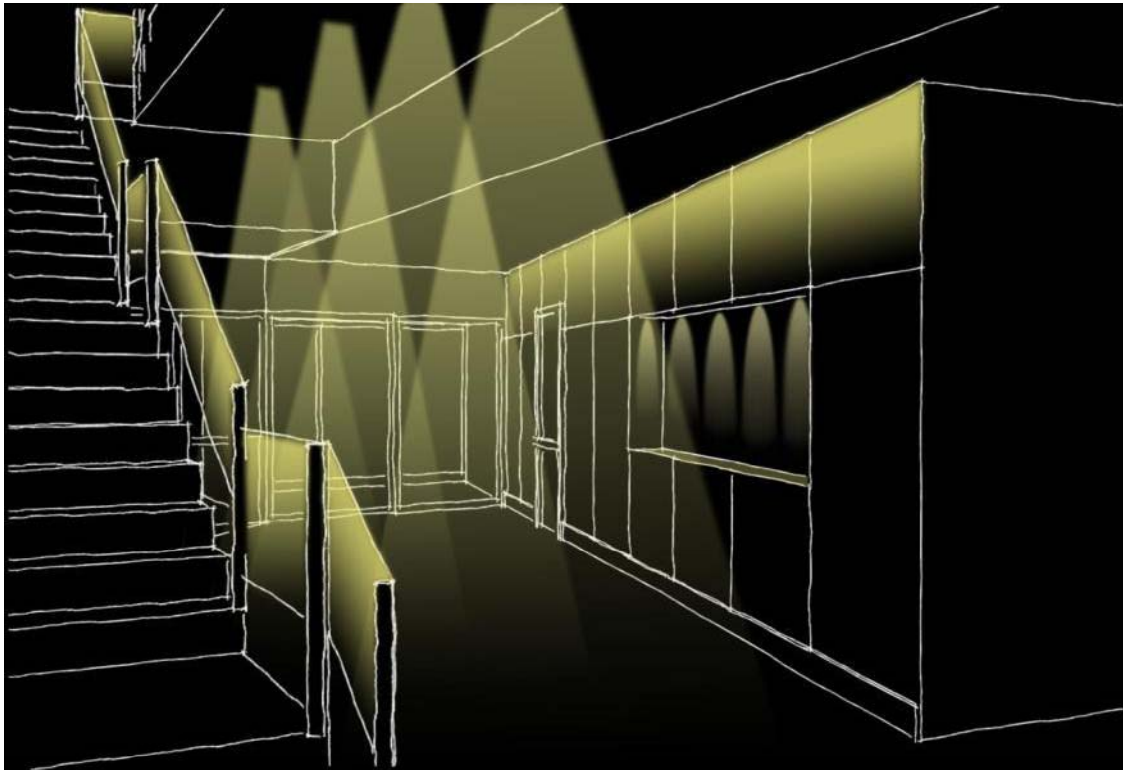
wheelock college

anne k cheney

schematic design

design scope

student lounge
conference room
cafeteria serving space
third floor balcony
typical dormitory room



wheelock college

anne k cheney

schematic design

design scope

student lounge | The first floor lounge gives students and faculty a place to relax during the day.

conference room | The conference room is a multi-task space, utilized as a meeting space, a classroom and a presentation space.

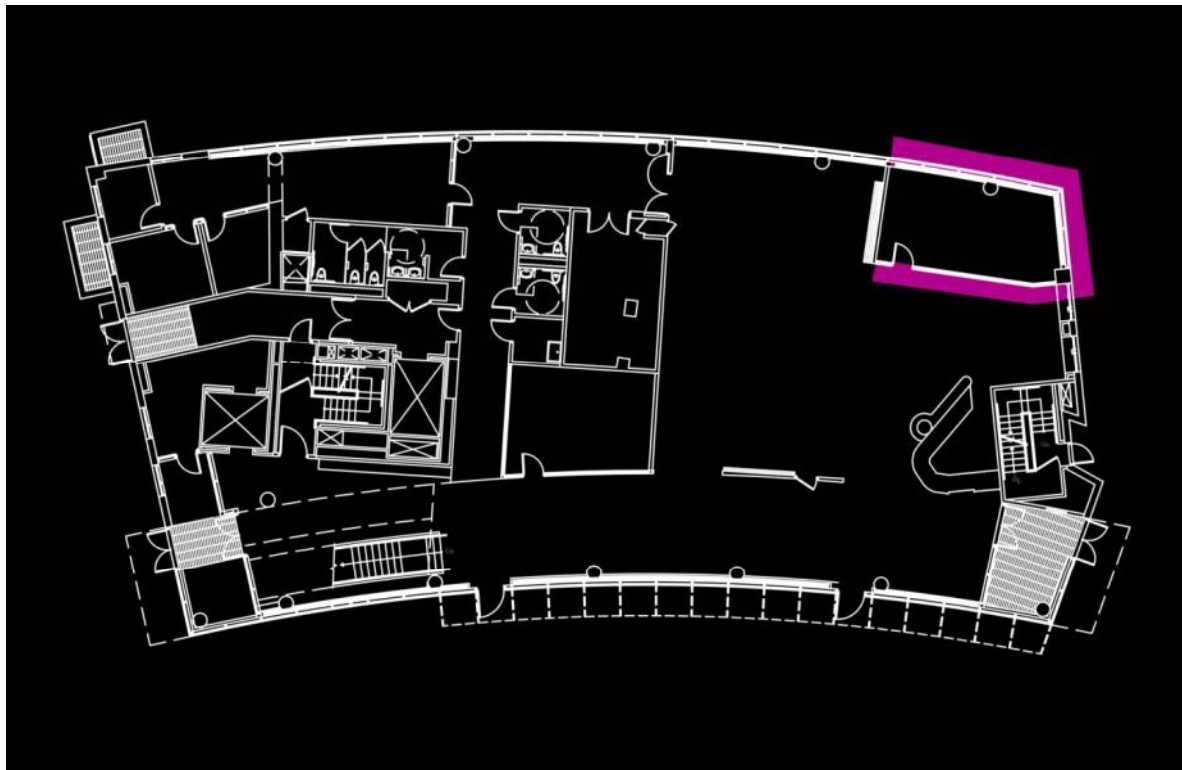
cafeteria serving space | The cafeteria serving area is a circulation space where students buy their food, eat and socialize.

third floor balcony | The third floor balcony houses a roof garden, and provides students with an outdoor space to relax away from the noise of campus.

typical dormitory room | The dormitories act as a study, living and sleeping space for two students.

design scope

student lounge
conference room
cafeteria serving space
third floor balcony
typical dormitory room



wheelock college

anne k cheney

schematic design

CONSIDERATIONS/CRITERIA

glass walls to the exterior and café space

wood paneling on presentation wall

requires different scene settings

Horizontal illuminance: 30 fc

Vertical illuminance: 5 fc

design scope

student lounge
conference room
cafeteria serving space
third floor balcony
typical dormitory room

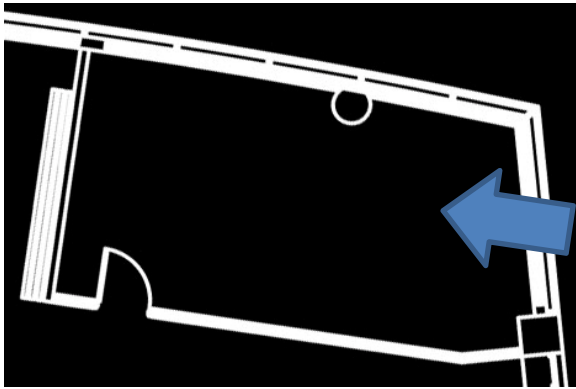
DESIGN CONCEPTS

multi-functional lighting

promote visual clarity

design scope

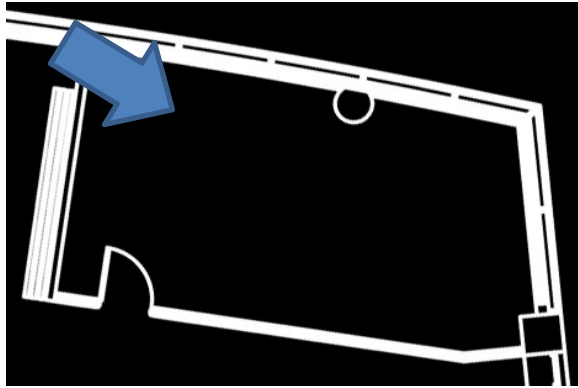
student lounge
conference room
cafeteria serving space
third floor balcony
typical dormitory room



wheelock college

anne k cheney

schematic design



design scope

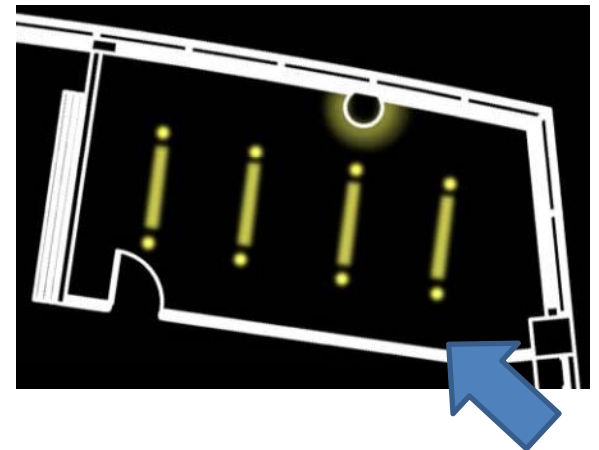
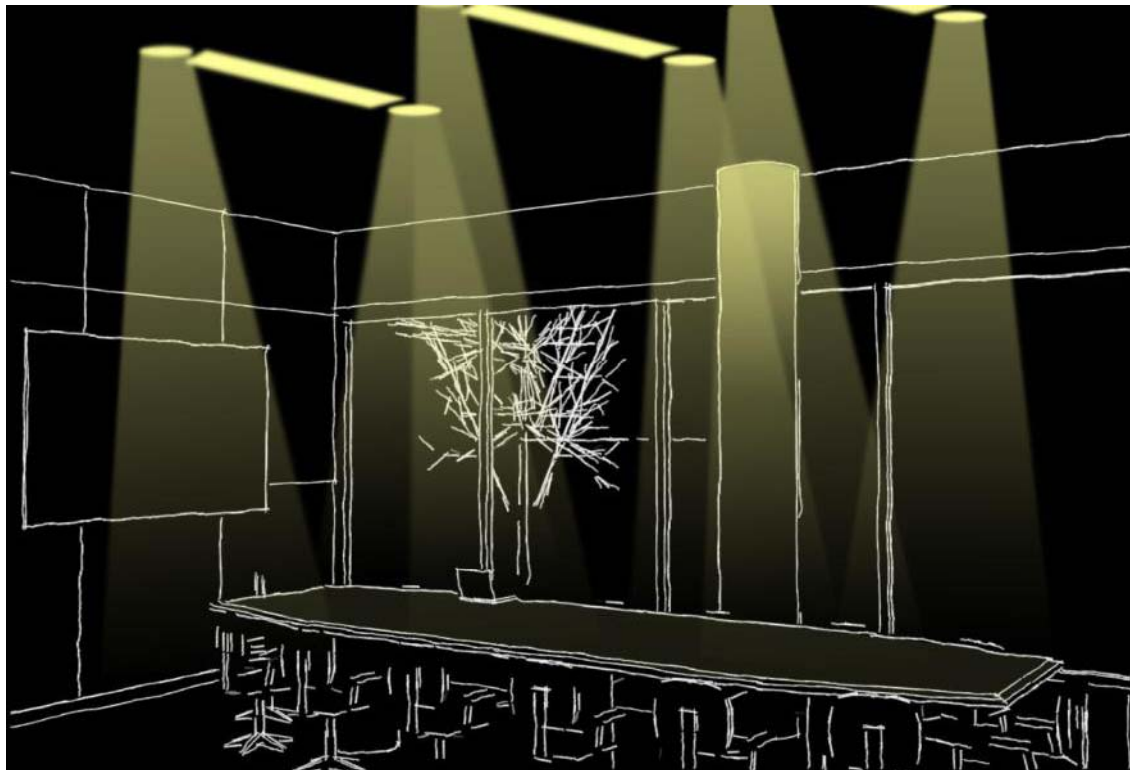
- student lounge
- conference room
- cafeteria serving space
- third floor balcony
- typical dormitory room



design scope

student lounge
conference room
cafeteria serving space
third floor balcony
typical dormitory room

DESIGN CONCEPT I



wheelock college

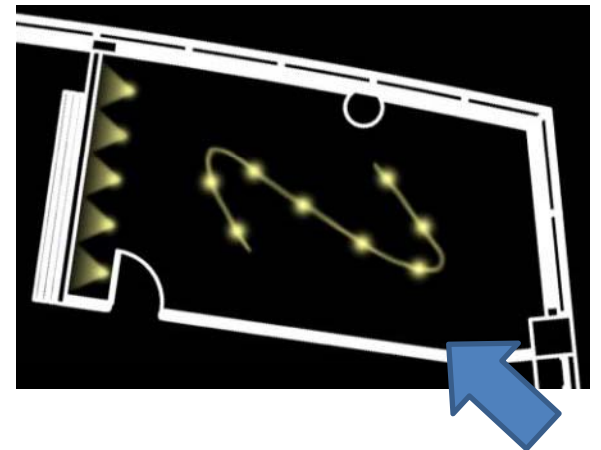
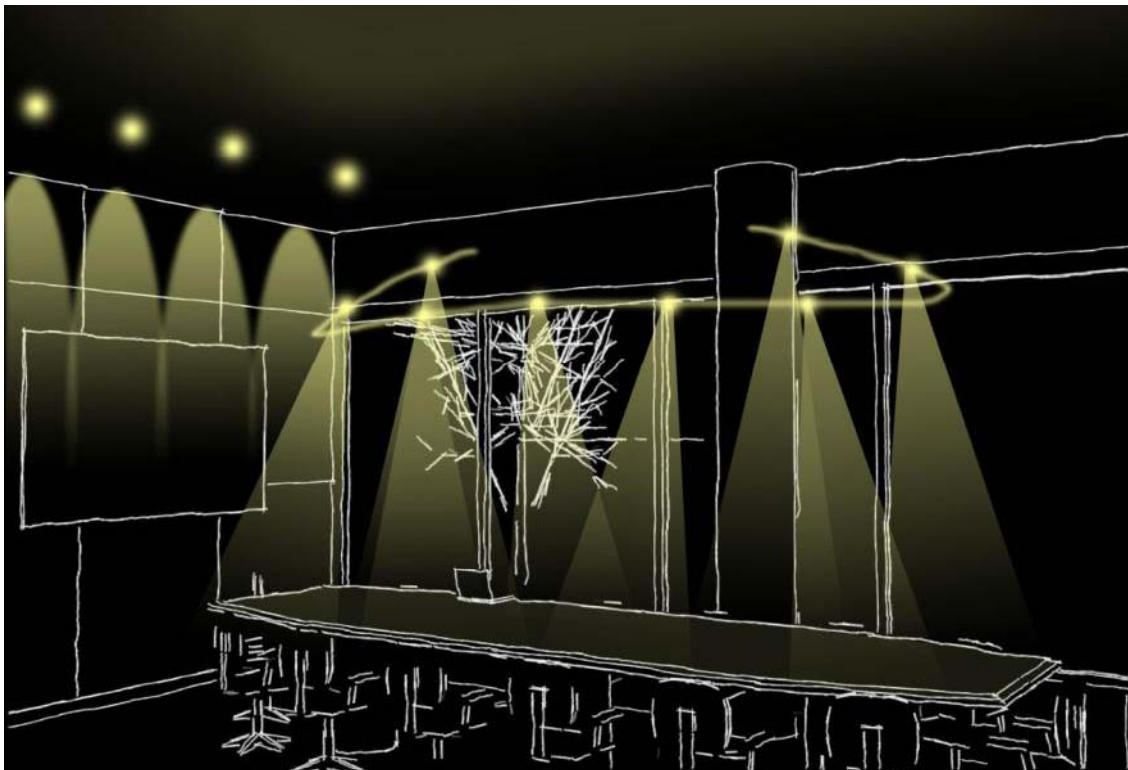
anne k cheney

schematic design

design scope

- student lounge
- conference room
- cafeteria serving space
- third floor balcony
- typical dormitory room

DESIGN CONCEPT II



wheelock college

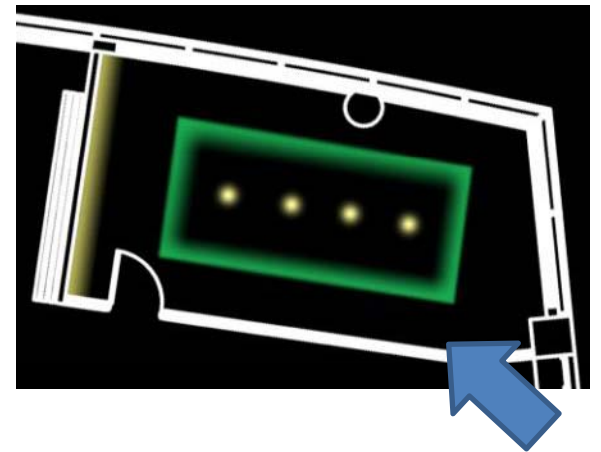
anne k cheney

schematic design

design scope

student lounge
conference room
cafeteria serving space
third floor balcony
typical dormitory room

DESIGN CONCEPT III



wheelock college

anne k cheney

schematic design

design scope

student lounge | The first floor lounge gives students and faculty a place to relax during the day.

conference room | The conference room is a multi-task space, utilized as a meeting space, a classroom and a presentation space.

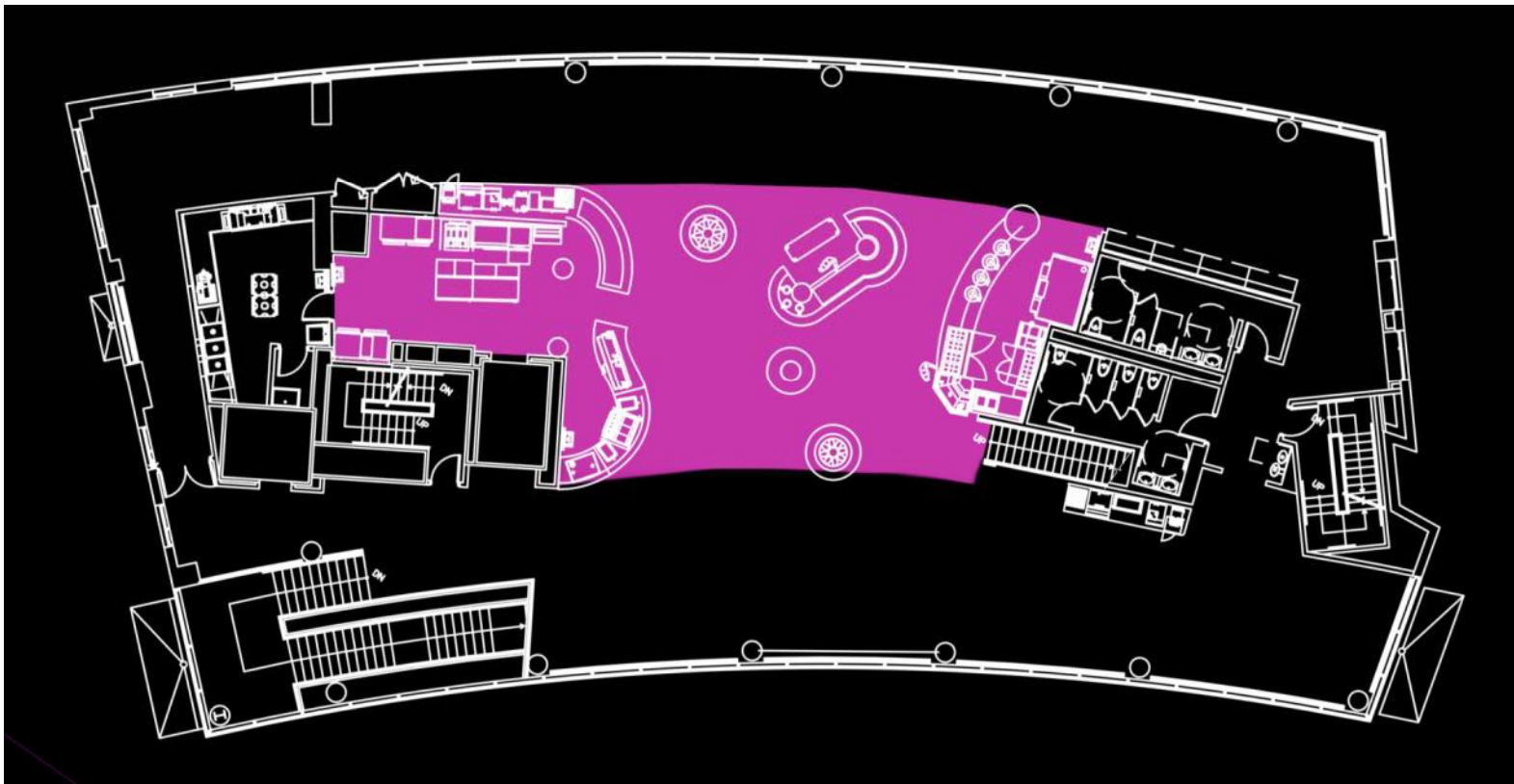
cafeteria serving space | The cafeteria serving area is a circulation space where students buy their food, eat and socialize.

third floor balcony | The third floor balcony houses a roof garden, and provides students with an outdoor space to relax away from the noise of campus.

typical dormitory room | The dormitories act as a study, living and sleeping space for two students.

design scope

student lounge
conference room
cafeteria serving space
third floor balcony
typical dormitory room



wheelock college

anne k cheney

schematic design

CONSIDERATIONS/CRITERIA

open spaces on the north and south sides

low ceiling height (8 ft)

preparation areas

high CRI to enhance food

horizontal illuminance: 10-30 fc

vertical illuminance: 3-5 fc

design scope

student lounge
conference room
cafeteria serving space
third floor balcony
typical dormitory room

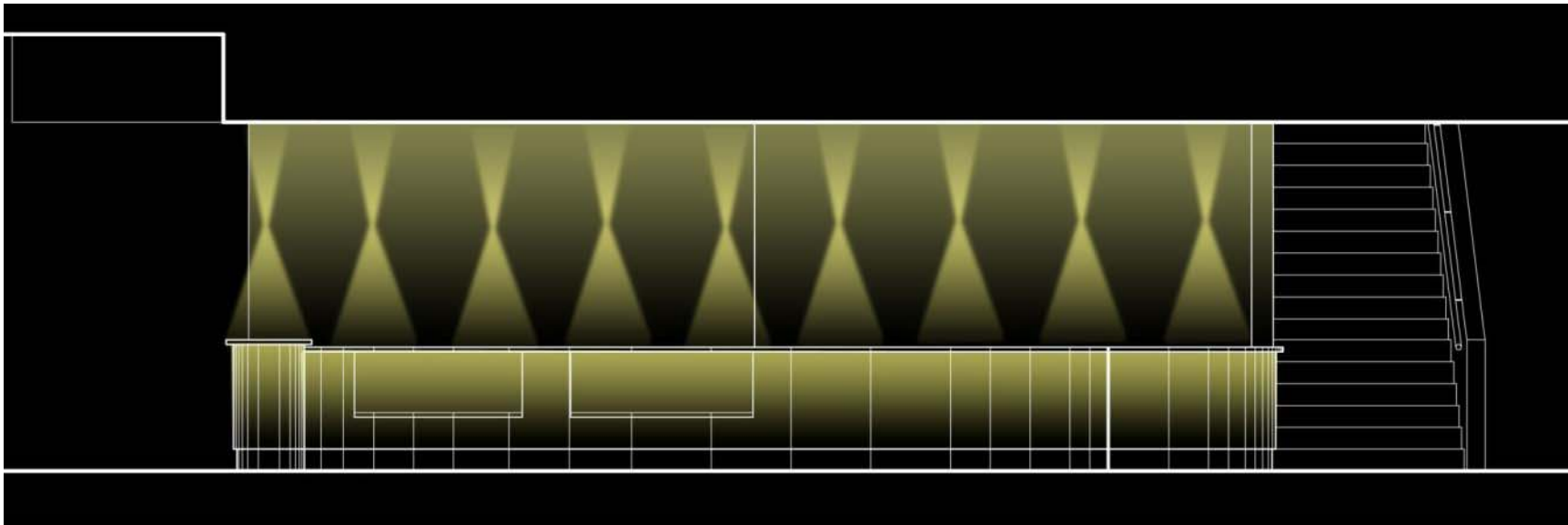
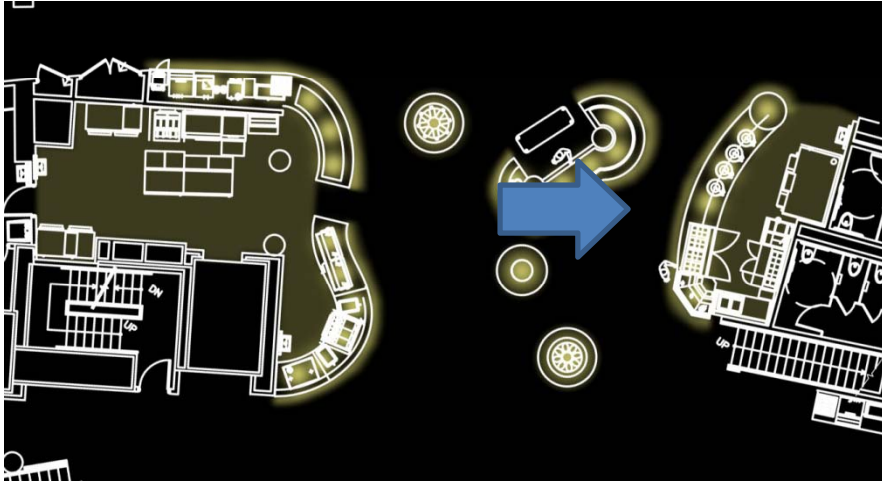
DESIGN CONCEPTS

direct people through space effectively

opens up a low ceiling

design scope

- student lounge
- conference room
- cafeteria serving space
- third floor balcony
- typical dormitory room



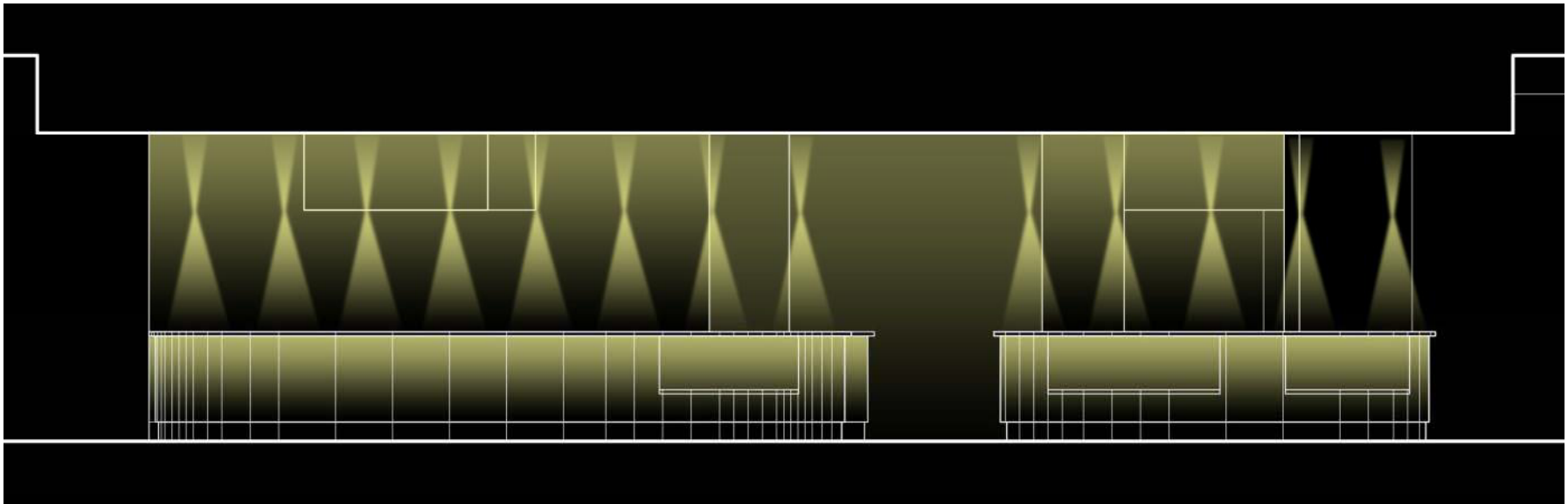
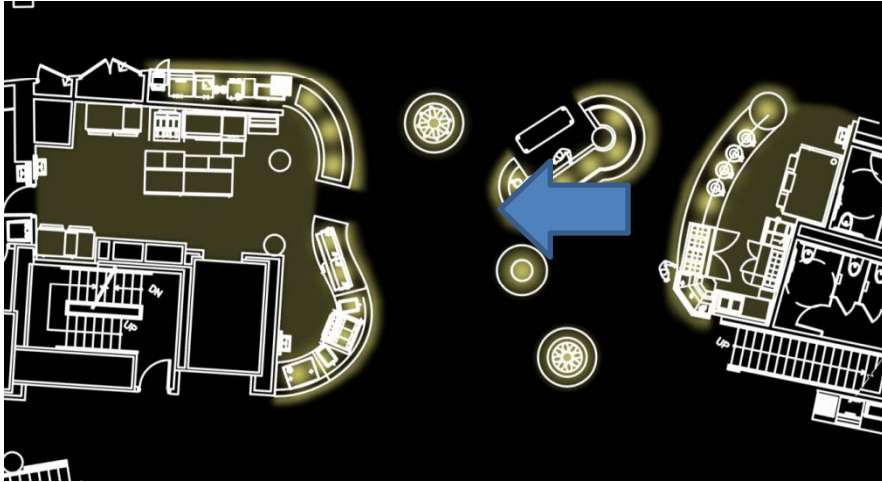
wheelock college

anne k cheney

schematic design

design scope

student lounge
conference room
cafeteria serving space
third floor balcony
typical dormitory room



wheelock college

anne k cheney

schematic design

design scope

student lounge | The first floor lounge gives students and faculty a place to relax during the day.

conference room | The conference room is a multi-task space, utilized as a meeting space, a classroom and a presentation space.

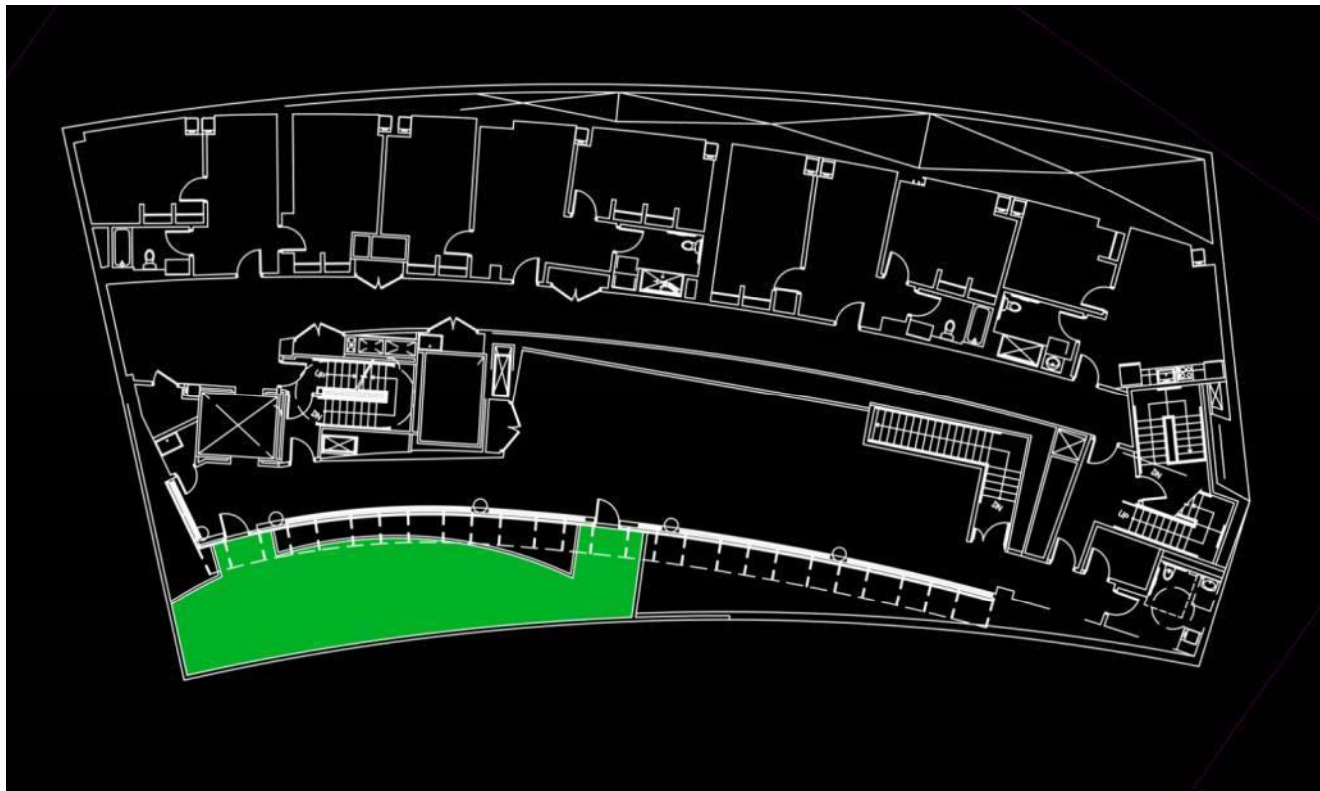
cafeteria serving space | The cafeteria serving area is a circulation space where students buy their food, eat and socialize.

third floor balcony | The third floor balcony houses a roof garden, and provides students with an outdoor space to relax away from the noise of campus.

typical dormitory room | The dormitories act as a study, living and sleeping space for two students.

design scope

student lounge
conference room
cafeteria serving space
third floor balcony
typical dormitory room



wheelock college

anne k cheney

schematic design

CONSIDERATIONS/CRITERIA

space will receive light from interior

size of plants varies

metal panel railing

horizontal illuminance: 5 fc

vertical illuminance: 3 fc

design scope

student lounge
conference room
cafeteria serving space
third floor balcony
typical dormitory room

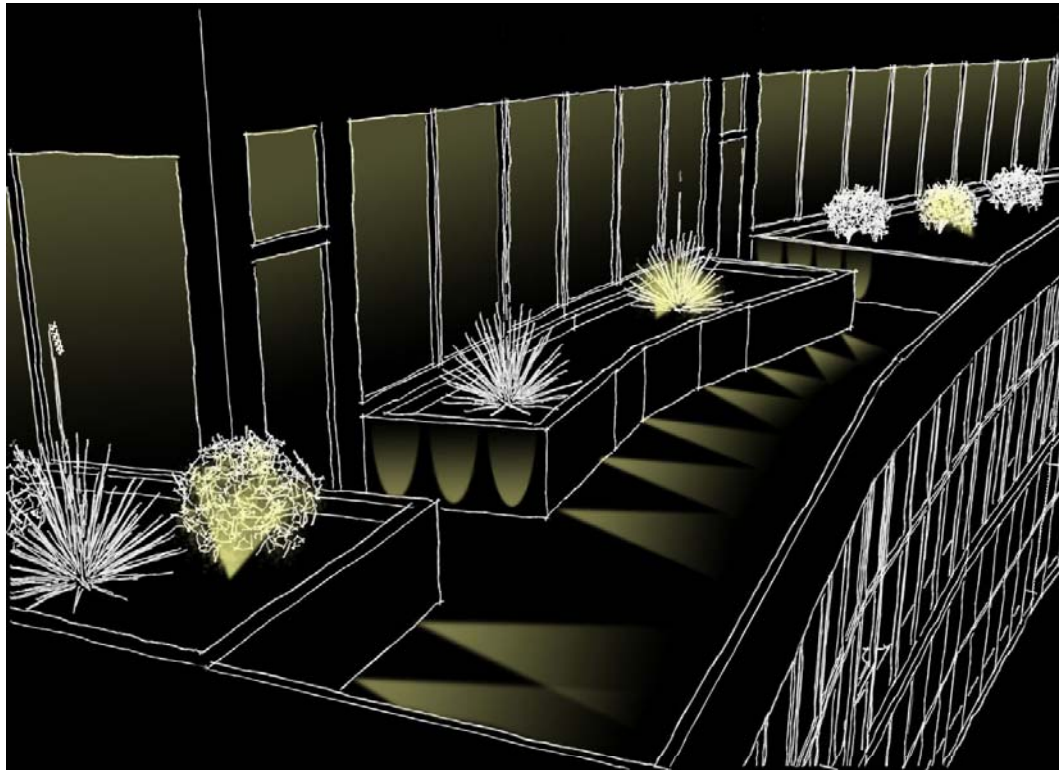
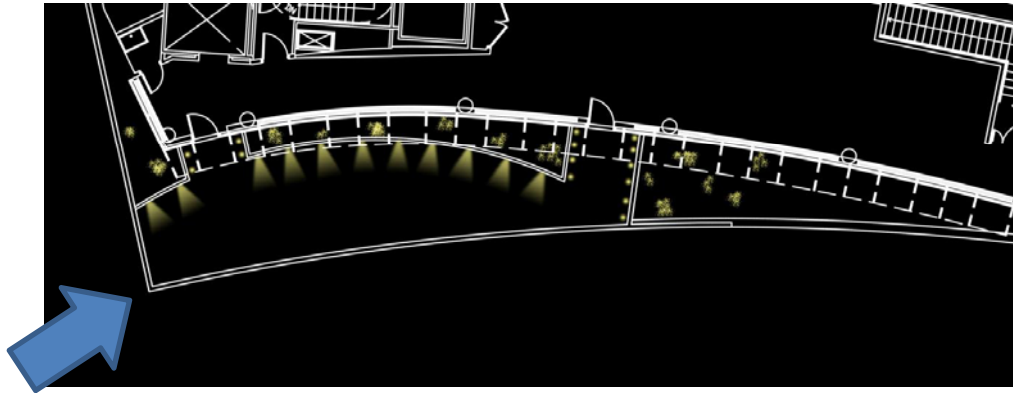
DESIGN CONCEPTS

create a relaxing space

encourage contemplation

design scope

student lounge
conference room
cafeteria serving space
third floor balcony
typical dormitory room



www.northbaylandscaping.com

wheelock college

anne k cheney

schematic design

design scope

student lounge | The first floor lounge gives students and faculty a place to relax during the day.

conference room | The conference room is a multi-task space, utilized as a meeting space, a classroom and a presentation space.

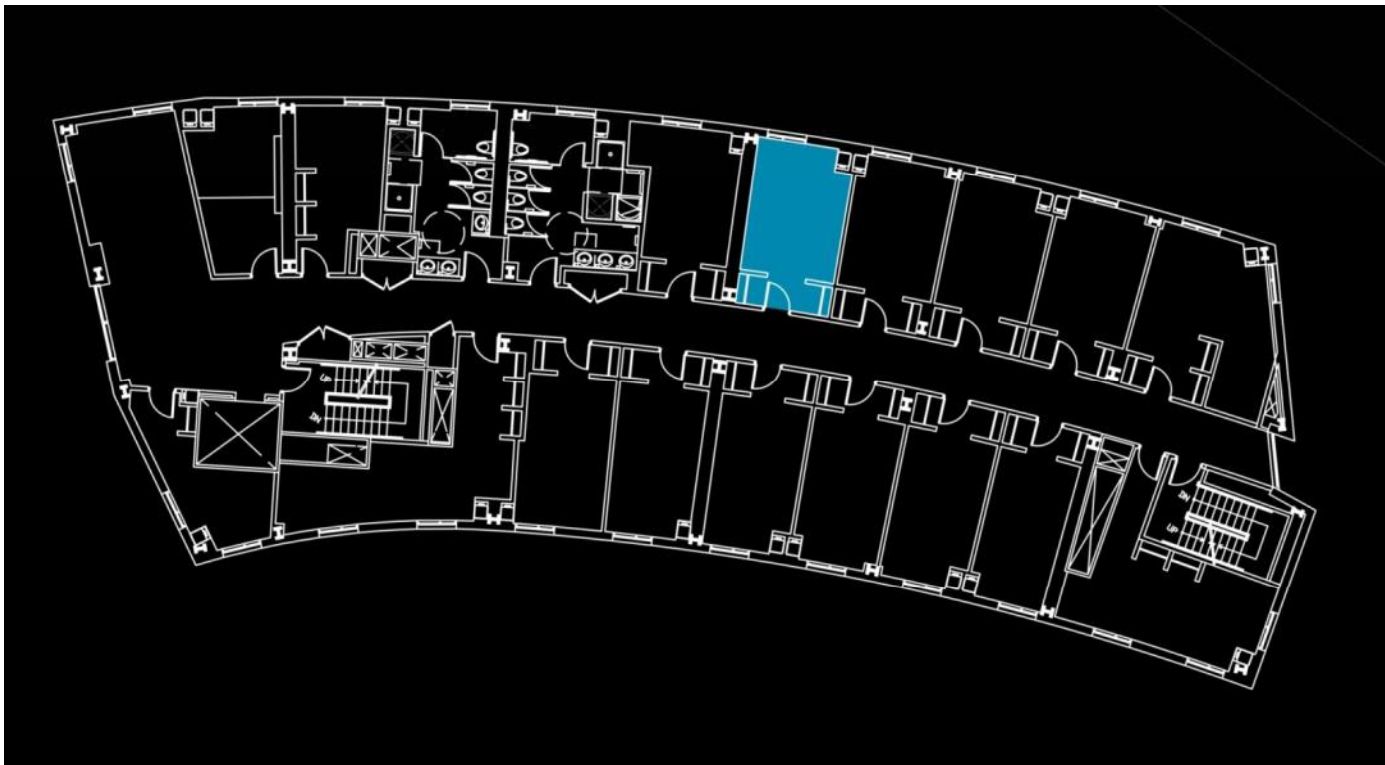
cafeteria serving space | The cafeteria serving area is a circulation space where students buy their food, eat and socialize.

third floor balcony | The third floor balcony houses a roof garden, and provides students with an outdoor space to relax away from the noise of campus.

typical dormitory room | The dormitories act as a study, living and sleeping space for two students.

design scope

student lounge
conference room
cafeteria serving space
third floor balcony
typical dormitory room



wheelock college

anne k cheney

schematic design

CONSIDERATIONS

small window

painted gypsum wall board

energy codes

uniform lighting on task plane

horizontal illuminance: 10-30 fc

vertical illuminance: 3 fc

design scope

student lounge
conference room
cafeteria serving space
third floor balcony
typical dormitory room

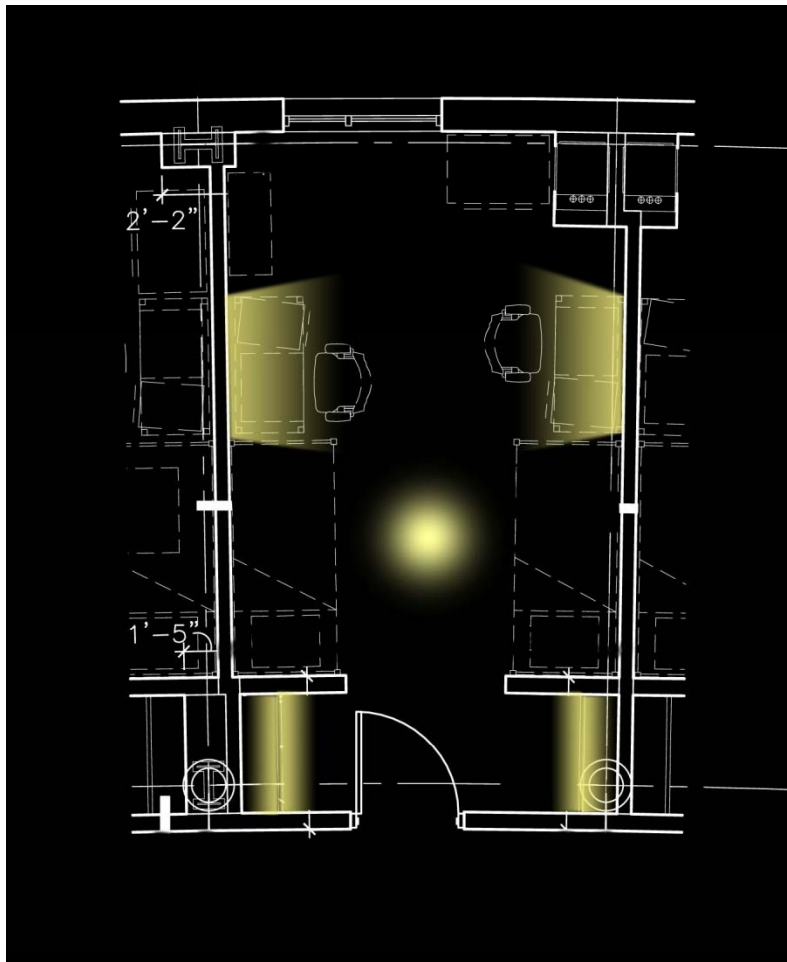
DESIGN CONCEPTS

create a space for living and studying

inviting and comfortable

design scope

student lounge
conference room
cafeteria serving space
third floor balcony
typical dormitory room



wheelock college

anne k cheney

schematic design